

IA_Logger Help

Getting Started

When the application is started you will be greeted with a screen as shown in figure 1.

Serial HTML Logger

Ignite Automation
www.igniteautomation.com
Serial HTML Data Logger
© 2007 - 2022 John Twomey

Serial Port Settings

Port: [Dropdown] Baud Rate: 9600 Parity: None Data Bits: 8 Stop Bits: 1

Handshaking: None ☐ DTR Enable ☐ RTS Enable Com Port Status: **Closed**

Data Length: 1 Read Timeout: -1 Write Timeout: -1 Refresh Open Port

Log File Settings

Selected Log File: [Dropdown] ☐ Override

Override Path and File: \\YOUR_SERVER\Log.html ☐ non HTML

Transmit

Enter String To Transmit: [Text Input]

☐ Include CR ☐ Include LF Clear Send

Receive

Last Received Data: [Text Input]

General Settings

☐ Disable ToolTip popups ☐ Hide me when viewing Log

Save View Log

Figure1.

Serial Port Settings:

The serial port is configured under the 'Serial Port Settings' window all the usual serial port variables are available and can be set here. There is also a 'Data Length' field - this is used to set the length of the string to be received by the serial port - this is set so as to facilitate a tidy format for the received data when it is to be written to the Log file. Read and write timeout values can be set in their associated fields.

There is a 'Refresh Button' under this section which closes the com port, re-enumerates all listed comports and reloads the values from the ini file. Any changes made in the setup of the port can be

'Saved' to the ini file and will be the default values when the application is loaded - the 'Save' button is located under the 'Action' section.

Log File Settings:

By default when the application is first loaded the 'Selected Log File' field loads all the HTML files in the application path. This field allows selection of the html file you wish to log to.

There is an 'Override' check box field - which, if ticked, disabled the default / Standard log file configuration and allows you to enter the path and file name in the 'Override Path and File' field - e.g. if you wanted to log data to a file network on your network ... you would enter \\MY_SERVER\mylog.html and the application would log to this remote file. Or to a local file you could enter C:\myfolder\mylogfile.html

Also present within this section is a 'non HTML' check box field - if this is selected it allows you to log to a text file specified within the 'Override path and file' field... assume the 'non HTML' check box is ticked and \\MY_SERVER\mylog.txt was specified in the Override field - the application would now log to this text file. When logging to text files the 'Bullet' style HTML formatting is disabled.

Transmit:

When the desired serial port is configured and you wish to transmit data - simply type the data you wish to send in the 'Enter String to Transmit' field and press 'SEND'. The data will then be transmitted. The CLEAR button within this section clears the 'Enter String to send' field. If this application was to be used for the same purpose and you wanted to send the same string all the time - the string in the 'Enter String to Transmit' field will also be saved to the INI file when SAVE is pressed in the Action section. Within this section there are 2 check boxes

'INCLUDE CR' - which, if ticked, will attach a chr(13) [Carriage Return] to the send string. Similarly 'INCLUDE LF' - which, if ticked, will attach a chr(10) [Line Feed] to the send string. Both ticked will add CRLF carriage return and Line Feed to the string.

RECEIVE:

This section merely displays the last received string.

General Settings:

The ACTION section has the option to disable the Tool Tip popups which appear when the mouse is hovered over any control on the form 'Disable ToolTip popups'. While the popups are helpful especially when you are getting familiar with the application they may be a nuisance as you become proficient with the operation of the application.

'Hide Me when viewing Log' - this will hide the main configuration window when the Log viewer button is pressed.

'SAVE' - this button will save ALL configurations to the INI file - port settings, 'String to Transmit', the default URL on the viewer window and any customisations selected. When save is successful a message will appear to confirm successful

saving of the details. see figure 2.

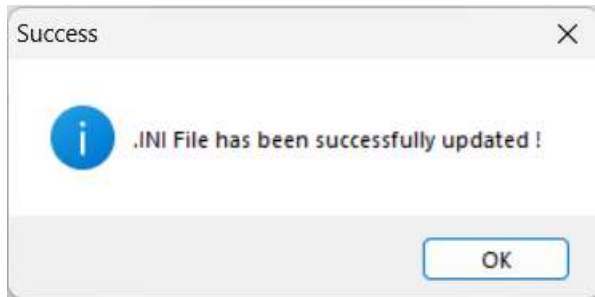


Figure2.

Pressing the 'View Log ' Button will open the log viewer window.

The Log Viewer:

The log viewer window is shown in figure3. This will display the configured log file and update/refresh automatically as new data is transmitted or received.

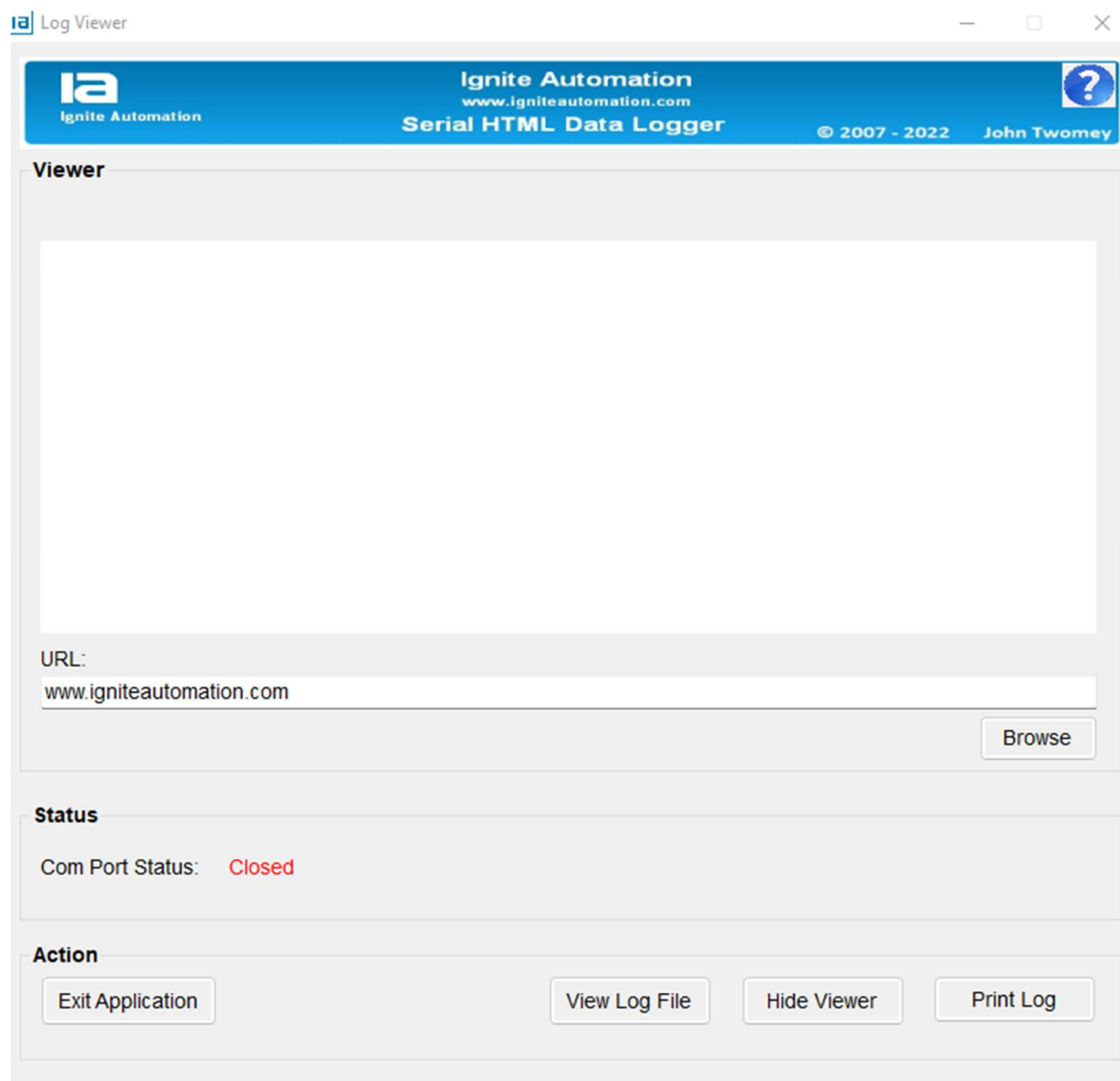


Figure3.

In the Browser Section you may enter the URL of your choice and press BROWSE to go to that web address.

If the logger is live and data is sent/received while in web browser mode the view will return from the web browser to the logfile. If you are browsing the web and wish to return to your log file simply click the Logfile button in the ACTION section.

Pressing print will call the print dialog to print your log file. Hide will close the viewer window and return you to the main configuration window. Exit - closes the application.

ERRORS:

If you encounter an error an error window explaining the fault will appear (see figure4) press OK to confirm this message. In general the error window will explain the fault as it happens but the application has a number of inbuilt error handling routines - e.g. if there was no INI file the application will warn you with an error popup but will create a default file. The same is true - if there was no log file - again the application creates a new 'Log.html' after warning you that a html file was not found in the application path.

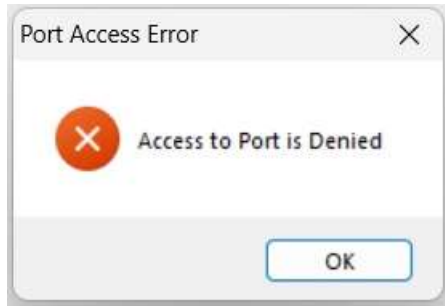


Figure 4.

License:

This application is provided "as is" with no warranty expressed or implied. Under no circumstances shall John Twomey or Ignite Automation be liable for direct, indirect, special, incidental, or consequential damages resulting from the use, misuse, or inability to use this software.

More Info and Feedback

Every effort was made to ensure that this application is functions correctly. If, however, you encounter a problem or issue with the application - I would very much like to hear about it ...

Email your comments to info@igniteautomation.com

I hope this application if useful to you!

Regards,

John Twomey