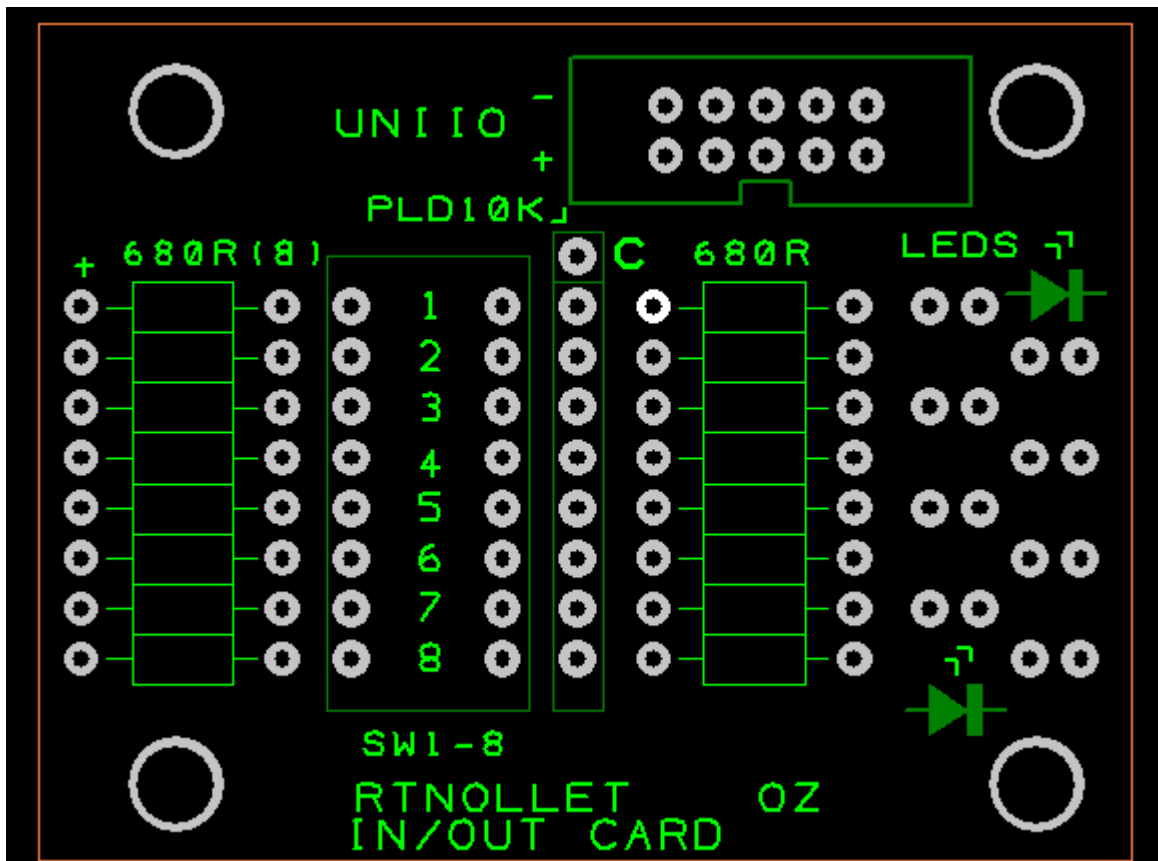


## Combination 'Handy PropBus "input and output card



This handy little card contains the following parts..

- 16 pcs 680 Ohm 0.25W resistor
  - 8 pcs are to limit the mA thru the led when pin is output
  - 8 pcs are to limit the potential large mA if I/O pin configured for output and is low and input is high ( this would be disastrous)
- 8 pcs 3MM red leds ( to indicate input status or output status ( explained later) )
  - Note the orientation of the LED ( as per the diagram above)
- 1 pc 8 way dip switch array to simulate input ( line up as per above)
- 1 pc 8 way resistor network ( each has 8 off 10K resistors in it)
  - This resistor network provides a pull down resistor to the I/O pin
  - Relevant when the I/O pin is configured for input . C denotes common(PLD10K)
- 1 pc 10 way ribbon cable IDC header line as per the notch ..
  - This connect this particular board to the PropBus motherboard
  - Or via the supplied adapters to a solderless Proto typing board also.
  - So very useful if you already have that type of a setup.

Schematic of what each in/out circuit looks like

